



# TEST REPORT

报告编号 : WTS18S01100859-2B  
**Reference No.**.....  
 申请商 : 深圳市海马士电子有限公司  
**Applicant**.....  
 地址 : 深圳市龙华新区大浪街道办华明路华明工业园 C 栋  
**Address** .....  
 : Building C, Huaming Industrial park, Huaming Road, Dalang,  
 Longhua, Shenzhen, China  
 制造商 : 深圳市海马士电子有限公司  
**Manufacturer** .....  
 : SHENZHEN HIMAX ELECTRONICS CO., LTD  
 产品名称 : 可充电锂聚合物电池  
**Name of product** .....  
 : Rechargeable Li-Polymer Battery  
 产品型号 : 751518  
**Model** .....  
 依据标准 : MH/T 1020-2013 锂电池航空运输规范  
**Standards** .....  
 : Air transport regulation for Lithium ion battery  
 \*MH/T 1052-2013 航空运输锂电池测试规范  
 \*Air transport lithium ion battery testing regulation  
 \*联合国《关于危险货物运输的建议书 规章范本》(第 19 修订版)特  
 殊规定 188 条  
 \*UNITED NATIONS "Recommendation on the TRANSPORT OF  
 DANGEROUS GOODS" Model Regulations (19th revised edition)  
 special provisions 188  
  
 样品接受日期 : 2018-01-18  
**Date of Receipt sample** ...  
 测试日期 : 2018-01-18  
**Date of Test** .....  
 发布日期 : 2018-01-19  
**Date of Issue**.....  
 测试结果 : 所提供的样品符合以上标准  
**Test Result**.....  
 : The submitted samples comply with the above standards

### Prepared By:

深圳市沃特测试技术服务有限公司

**Waltek Services (Shenzhen) Co., Ltd.**

地址: 中国广东深圳宝安区松岗街道白马路富康泰厂房一楼

**Address: 1/F, Fukangtai Building, West Baima Rd., Songgang Street, Baoan District, Shenzhen Guangdong, China**

电话 Tel: +86-755-83551033

传真 Fax: +86-755-83552400

编辑 Compiled by:

批准 Approved by:

李文君 Sandy Li/工程师 Project Engineer



钟明 Philo Zhong /经理 Manager



产品的基本信息 <b>General product information:</b>	
产品名称和型号 Sample name and model .....	可充电锂聚合物电池 751518 Rechargeable Li-Polymer Battery 751518
额定值 Ratings .....	3.7V 130mAh 0.48Wh
电池商标 Trade mark.....	/
设备名称和型号 Equipment name and model .....	/
设备商标 Trade mark of equipment .....	/
包装件说明 Instructions of Package .....	<p>包装件外包装为 A=A 纸箱, (290×230×240) mm, 总重 3.1kg; 内含 600 个可充电锂聚合物电池, 可充电锂聚合物电池总净重 1.8kg, 可充电锂聚合物电池单独运输, 电池固定在吸塑盘上, 套有 PE 塑料袋</p> <p>Out package is a rectangle A=A carton, Dimension (290×230×240) mm, Gross weight 3.1kg, containing 600Pcs of Rechargeable Li-Polymer Battery, total net weight of battery is 1.8kg, Rechargeable Li-Polymer Battery transport only, batteries fasten to plastic tray and covered by PE plastic bags.</p>
检测项目 Test items .....	1.2m 跌落测试 1.2m Drop test
检测结论 Test conclusion .....	<p>被测包装件能够承受1.2m跌落测试试验, 其内装的电池没有破损, 没有产生导致内部电池的直接接触的移动及内容物的泄漏</p> <p>The tested package is capable of withstanding a 1.2m drop test in any orientation without damage to cells or batteries contained therein, without shifting of the contents so as to allow battery to battery or cell to cell contact and without release of contents.</p>





### 1.2m 跌落测试 1.2m drop test:

包装件从 1.2m 的高度自由跌落至冲击板上, 应对包装件的重点部位进行测试,如包装箱的底部、顶部、长侧面、短侧面、棱和角等 6 个方向各跌落一次。除平面着地的跌落外, 包装件中心所做垂线应通过撞击点。如果在一次跌落测试中可有一种以上的可选部位, 应选择最易使包装件损坏的跌落部位。

Package should be free dropped from a height of 1.2 m onto a strike plate. The package is dropped in a key point ,such as bottom、top、long side、short side、edge、angle ,six orientations should be dropped once. Except drop for flat side, packaging center perpendicular line should be done through the point of impact. If there is more than one optional parts during a drop testing, it should choose the parts which most easily damaged to packaging.

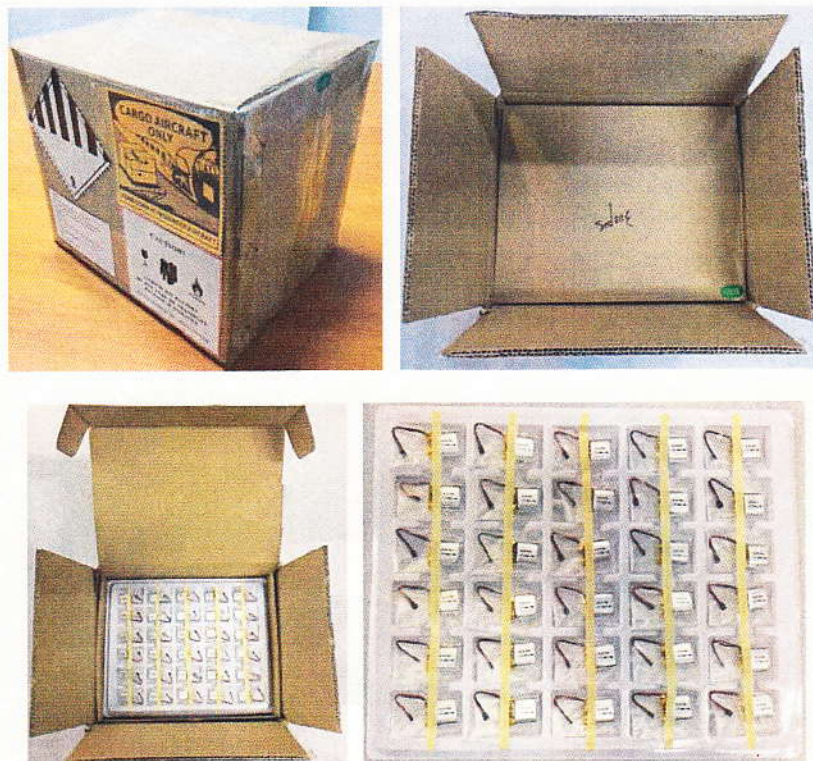
序号 No.	测试依据 Test according to	跌落方向 Drop position	结论 Result	备注 Remark
1	MH/T 1020-2013 锂电池航空 运输规范 Air transport regulation for Lithium ion battery *MH/T 1052-2013 航空运输锂 电池测试规范 *Air transport lithium ion battery testing regulation *联合国《关于危险货物运输 的建议书 规章范本》(第 19 修订版) 特殊规定 188 条 *"UNITED NATIONS " Recommendation on the TRANSPORT OF DANGEROUS GOODS" Model Regulations (19th revised edition) special provisions 188	上面跌落 Top	合格 Pass	
2		底面跌落 Bottom	合格 Pass	
3		侧面跌落 Side	合格 Pass	
4		前面跌落 Front	合格 Pass	
5		棱跌落 Edge	合格 Pass	
6		角跌落 Angle	合格 Pass	
备注 Remark: 包装件不出现以下情况, 则满足试验要求: If package does not appear follow condition, the test meet the requirements: A- 内装电芯或电池破损或泄漏 Damaged or leakage for built-in cells or batteries B- 内装物移动, 使电池之间 (或电芯之间) 接触或发生短路; Shift for contents, batteries (cells) have contact directly or short-circuit C- 内装物外漏 Contents out-leakage				

环境条件 Environment conditions:

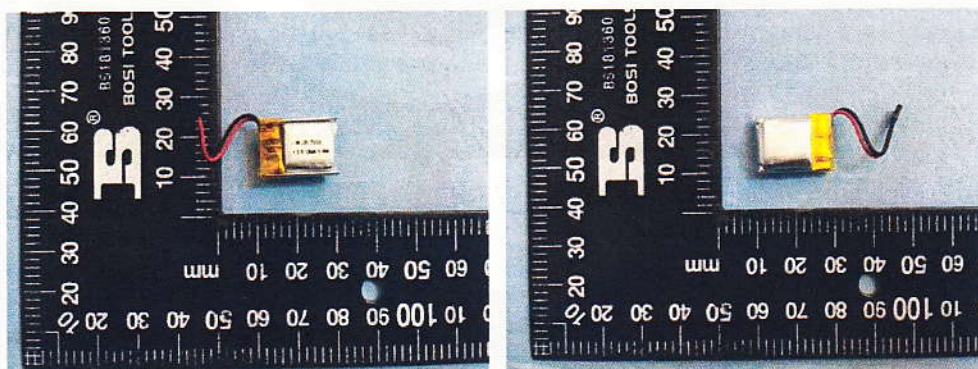
温度 Temperature: (20±5) °C, 湿度 Humidity: 40%-70%



包装件图片 Photo of Package:



电池图片 Photo of Battery:



==== 报告结束 End of Report =====

WALTEK  
S.Z. CO., LTD.