



life.augmented

ST4SIM solutions for M2M cellular connectivity



Connecting everything everywhere

Cellular connectivity allows several devices to be connected anywhere at any time, while ensuring asset security

Providing
connectivity
services
wherever
you go

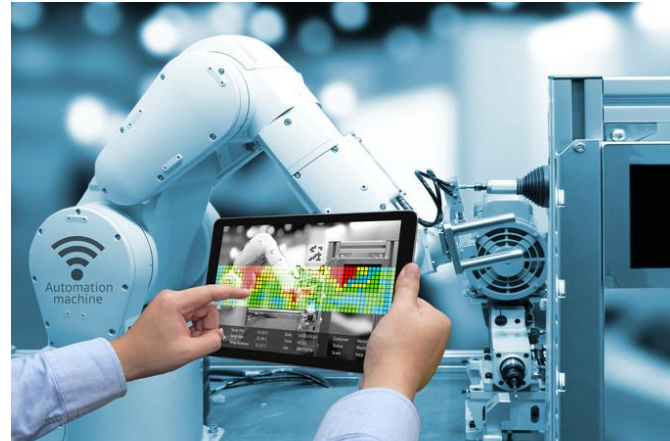


- ✓ Always connected
- ✓ Real-time asset management
- ✓ Improved coverage
- ✓ Flexible connectivity

ST4SIM complete portfolio



ST4SIM-S for IoT



ST4SIM-M for Industrial



ST4SIM-A for Automotive

Basic SIM & eSIM (ST4SIM-100 S / M)

Optimized and Cost effective

Crypto SIM & eSIM (ST4SIM-110 S / M / A)

Advanced secure communication

GSMA eSIM (ST4SIM-200 M / A)

Scalable & interoperable solution



ST4SIM solution overview

Secure cellular connectivity solutions for IoT, Industrial & Automotive



- **Wide range of SIM/eSIM solutions** based on Classic, Advanced and GSMA SGP.02 configurations
- **GSMA eSIM certified and interoperable** with MNOs & Subscription Management platforms
- **Complete ecosystem** with trusted partners for connectivity & Subscription Management Platforms
- **IoT, Industrial & Automotive grade solutions** (T° & reliability)
- **Multiple packages format** (Card plugin, MFF2, WLCSP)

ST4SIM ecosystem

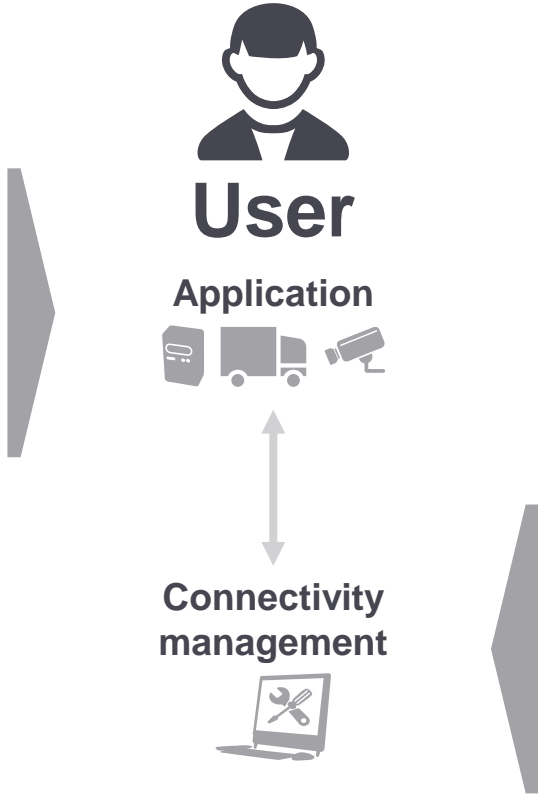
ST4SIM component




- IoT, Industrial and Automotive-grade
- Multiple form factor
- SIM / eSIM SoC configuration
- GSMA eSIM certified and interoperable



+ Pre-loaded connectivity from partner




Connectivity platforms

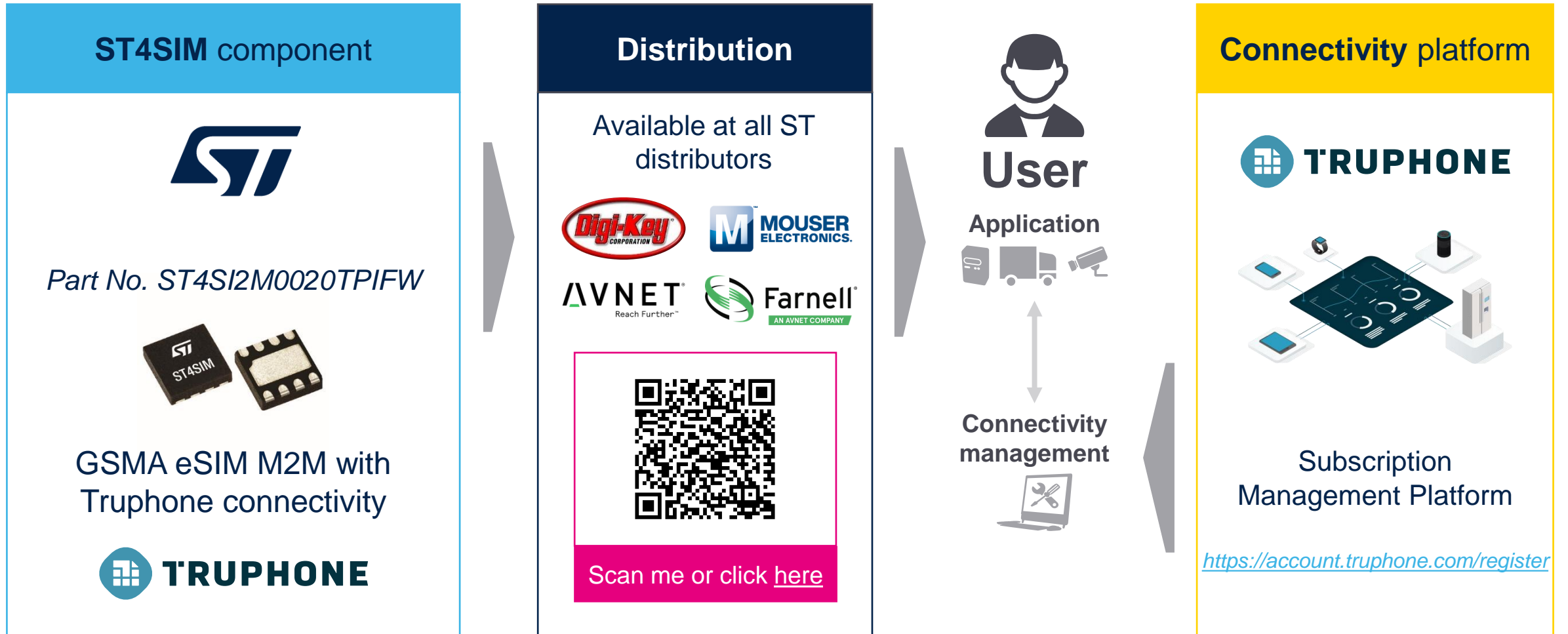


Complete ecosystem with

- **SM-SR:** Subscription Manager Secure Routing
- **SM-DP:** Subscription Manager Data Preparation



ST4SIM-200M available at e-distribution



Secure connectivity solutions

ST's eSIM solution strengthens its position in IoT, Industrial & Automotive markets

Cellular Connectivity secure solution leader

SIM / eSIM for consumer or IoT devices (GP / GSMA-certified)
Proven field quality with more than 1.5 billion ST33 family cards deployed



Strong reliability and security in industrial & automotive markets

Industrial-grade qualification JEDEC [- 40°C / +105°C]
Automotive-grade qualification AEC-Q100 grade 2 [-40°C / +105°C]
Common Criteria EAL5+ certified solutions



State-of-the-art secure product

State-of-the-art, secure and flexible embedded OS (including certified cryptographic algorithms)
Java Card applet development (Extended OS features and added services)
Standard involvement (GSMA / SIMalliance / Global Platform / 3GPP / ETSI / Car Connectivity Consortium)



ST4SIM solutions takeaways



- IoT, Industrial and Automotive-grade solutions
- Complete cellular connectivity solution with trusted partners
- Interoperability with large panel of partners (platform / MNO)

Our technology starts with You



Find out more at www.st.com/st4sim

© STMicroelectronics - All rights reserved.

ST logo is a trademark or a registered trademark of STMicroelectronics International NV or its affiliates in the EU and/or other countries.

For additional information about ST trademarks, please refer to www.st.com/trademarks.

All other product or service names are the property of their respective owners.



life.augmented