
SIMetrix / SIMPLIS: PSpice model import

Introduction

SIMetrix / SIMPLIS are spice based simulators, therefore they are compatible with models developed with Orcad PSpice. This document shows an example of protection model import on SIMetrix / SIMPLIS.

1 ESDCAN04-2BWY model import on SIMetrix / SIMPLIS

SIMetrix / SIMPLIS provide a procedure to import external spice model.

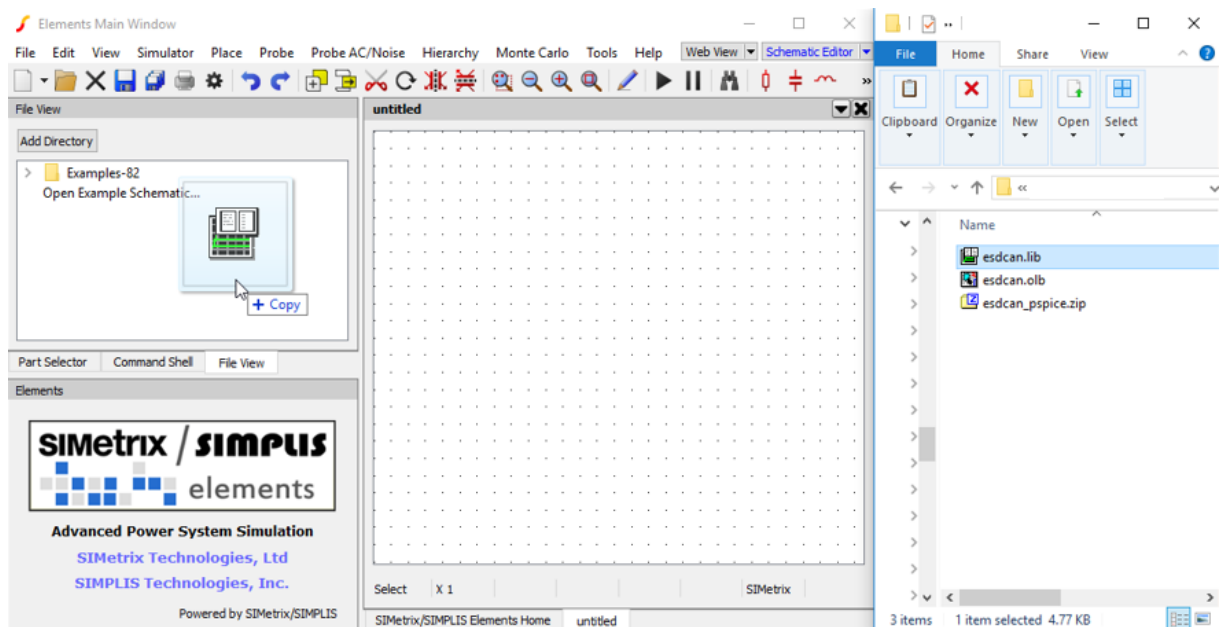
Same procedure has been performed to import ESDCAN04-2BWY PSpice model, using the SIMetrix / SIMPLIS demonstration free version, release 8.20h.

First step: download and unzip ESDCAN library on www.st.com web site (on [ESDCAN04-2BWY](#) web page), you will get two files, esdcan.lib and esdcan.olb.

Second step: launch SIMetrix / SIMPLIS, select the menu (File / New / SIMetrix Schematic) to open a new schematic.

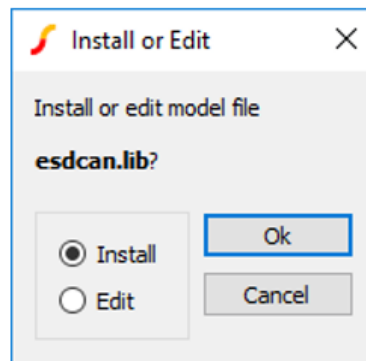
Third step: drag and drop esdcan.lib into the command shell window.

Figure 1. Drag and drop lib on SIMetrix /SIMPLIS



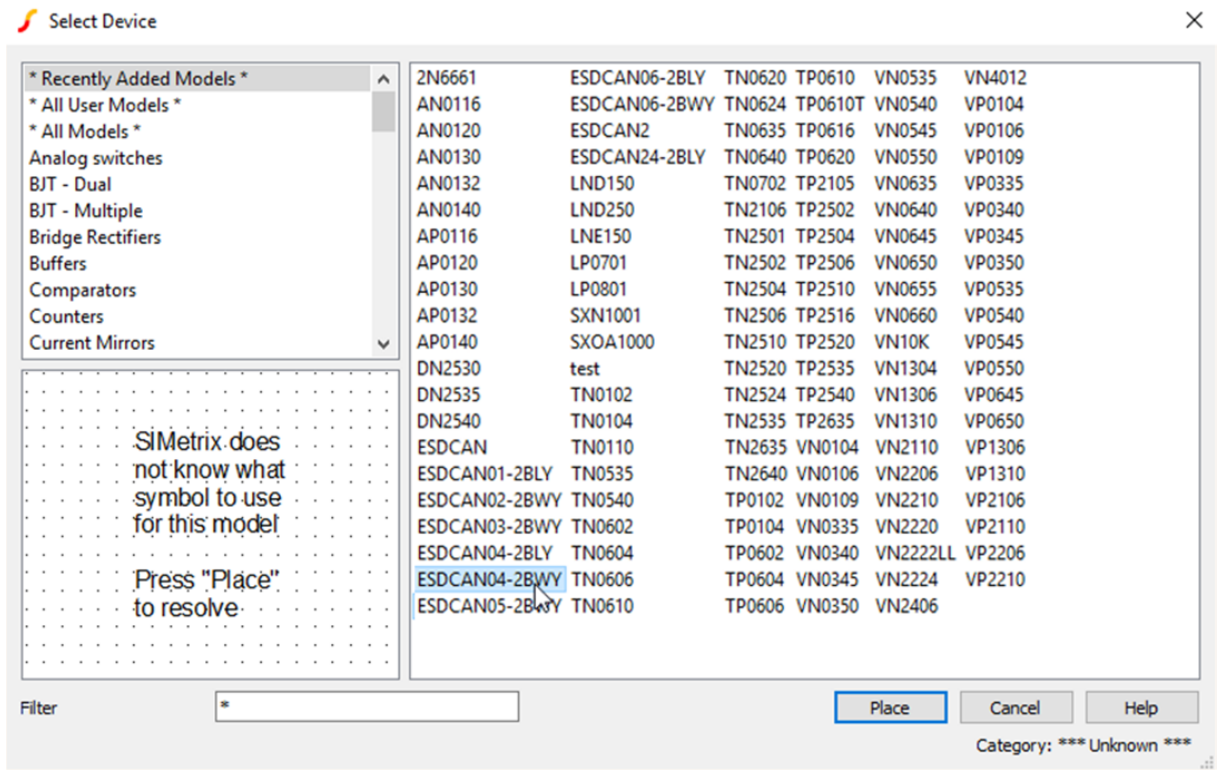
Then, the following window appears, select "Install".

Figure 2. Library installation



Fourth step: place ESDCAN04-2BWY on schematic, by selecting the menu (Place / From Model Library), and on the following window, select ESDCAN04-2BWY and then click on "Place" button.

Figure 3. Part selection window



The software then asks you to associate a symbol to the model: connections between symbol and model are made by putting in order the symbol pin in the same way as the model.

Figure 4. Correspondence between part pins and symbol

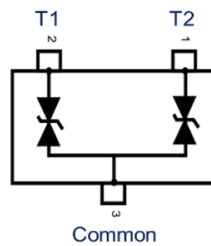
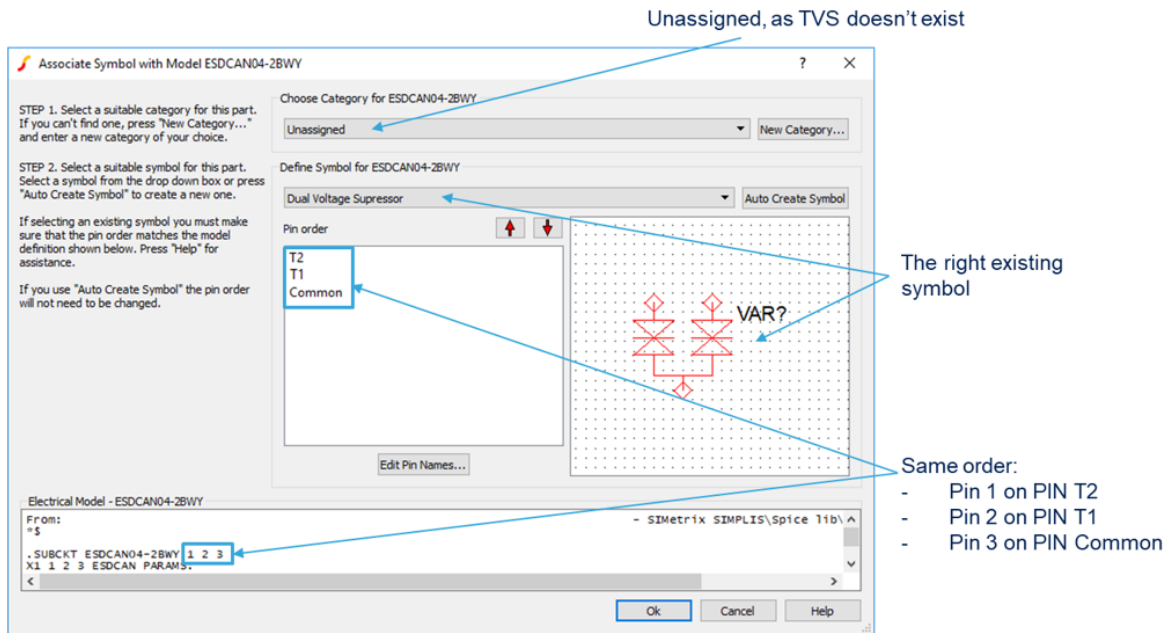
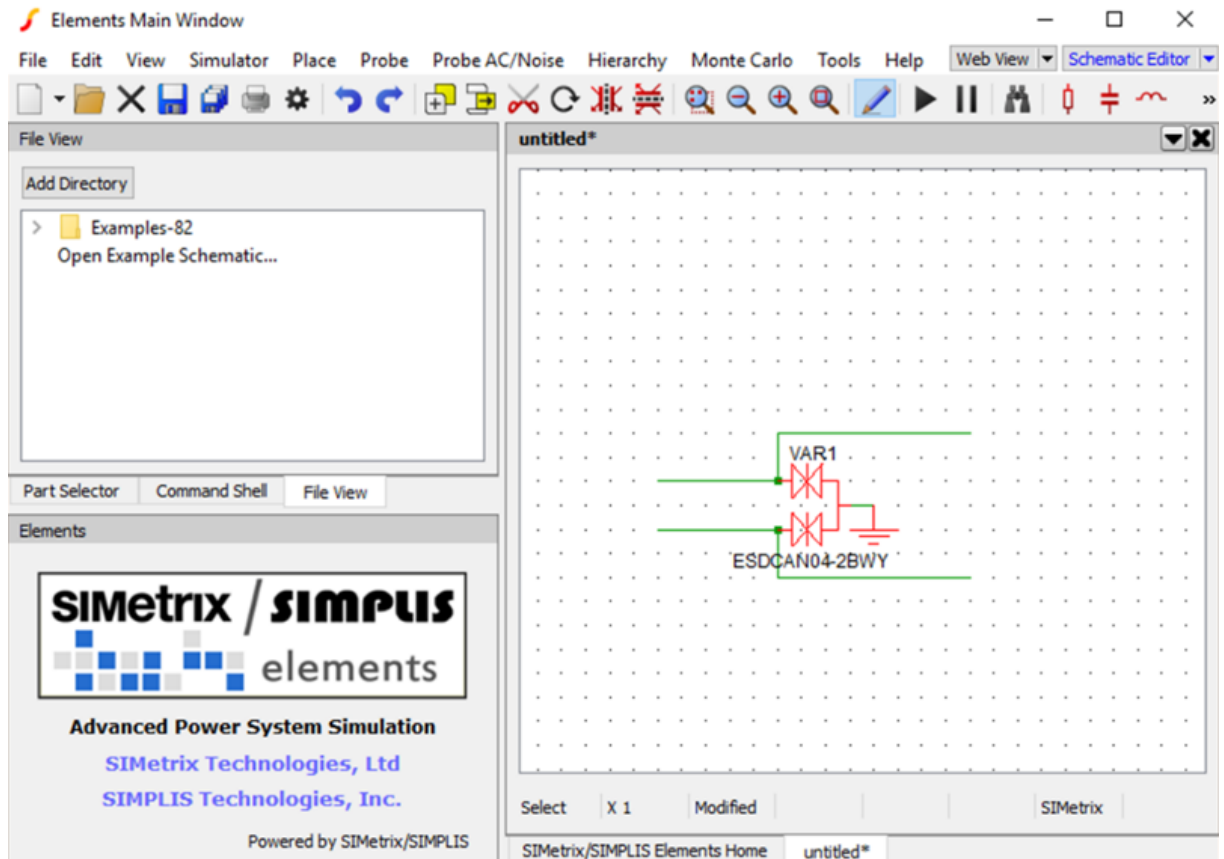


Figure 5. Association of symbol with model


ESDCAN04-2BWY is ready to be used in your SIMetrix / SIMPLIS simulation.

Figure 6. Part on schematic


Revision history

Table 1. Document revision history

Date	Version	Changes
02-Jul-2019	1	Initial release.

Contents

1	ESDCAN04-2BWY model import on SIMetrix / SIMPLIS	2
	Revision history	5
	Contents	6
	List of figures.....	7

List of figures

Figure 1.	Drag and drop lib on SIMetrix /SIMPLIS	2
Figure 2.	Library installation	2
Figure 3.	Part selection window	3
Figure 4.	Correspondence between part pins and symbol	3
Figure 5.	Association of symbol with model	4
Figure 6.	Part on schematic	4

IMPORTANT NOTICE – PLEASE READ CAREFULLY

STMicroelectronics NV and its subsidiaries (“ST”) reserve the right to make changes, corrections, enhancements, modifications, and improvements to ST products and/or to this document at any time without notice. Purchasers should obtain the latest relevant information on ST products before placing orders. ST products are sold pursuant to ST’s terms and conditions of sale in place at the time of order acknowledgement.

Purchasers are solely responsible for the choice, selection, and use of ST products and ST assumes no liability for application assistance or the design of Purchasers’ products.

No license, express or implied, to any intellectual property right is granted by ST herein.

Resale of ST products with provisions different from the information set forth herein shall void any warranty granted by ST for such product.

ST and the ST logo are trademarks of ST. For additional information about ST trademarks, please refer to www.st.com/trademarks. All other product or service names are the property of their respective owners.

Information in this document supersedes and replaces information previously supplied in any prior versions of this document.

© 2019 STMicroelectronics – All rights reserved